

Τέλι Τέλι

Διασκευή: Σιταρίδης Χρήστος

Am

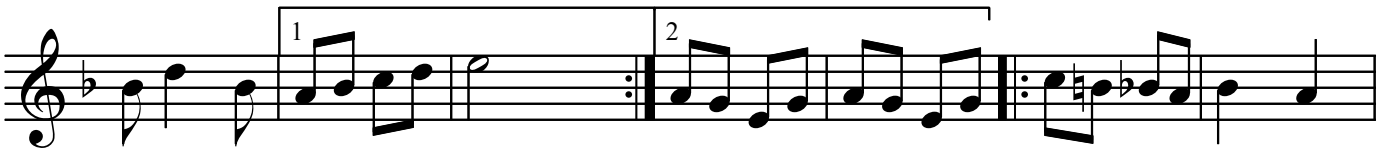
Dm

C



Gm

Am



C

Dm

Gm

C

Am



Dm

C

Gm

Am



Am

C



Dm

Gm

C



Am C Dm

A musical staff in G major with a treble clef and a key signature of one flat (Bb). The staff contains a sequence of notes: G4 (quarter), A4-B4 (eighths), C5 (quarter), B4-A4 (eighths), G4 (quarter), F4 (quarter), E4 (quarter), D4 (quarter), C4 (half). Above the staff, the chords Am, C, and Dm are indicated at their respective positions.

Gm C Am

A musical staff in G major with a treble clef and a key signature of one flat (Bb). The staff contains a sequence of notes: G4 (quarter), A4-B4 (eighths), C5 (quarter), B4-A4 (eighths), G4 (quarter), F4 (quarter), E4 (quarter), D4 (quarter), C4 (half). Above the staff, the chords Gm, C, and Am are indicated at their respective positions.